

Exclusive caries detection technology

Enhanced white light images

With the CS 1600 caries detection mode, the camera's specular reflection removal technology provides enhanced white light images for the clearest view of tooth surfaces, crucial for accurate caries detection and invaluable for visual examination. Images from standard intraoral cameras have specular reflections that appear as bright spots, which can either mask carious areas, or be mistaken as early caries in regions that are otherwise healthy. Specular reflection removed images display tooth surfaces in complete detail, allowing clear assessment of tooth surface condition and facilitating caries examination.

Standard Intraoral Camera Image



Presence of specular reflection masks carious features

CS 1600 Image in Detection Mode

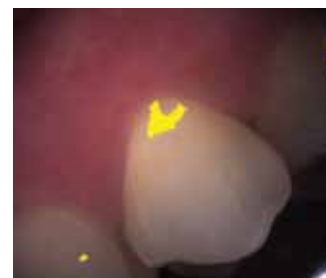


With specular reflection removed, incipient caries are clearly visible

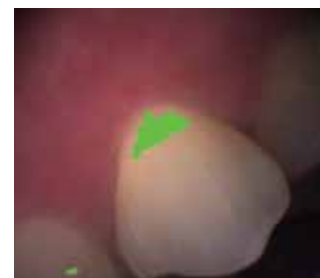
Exclusive FIRE technology

Once a potential incipient lesion has been identified by video detection, the practitioner can capture areas of interest on still images for more accurate detection and analysis of the suspected caries by using the FIRE (Fluorescence Imaging with Reflectance Enhancement) technology, available exclusively with the CS 1600. Combined fluorescence and reflectance technology quickly and safely reveals suspicious incipient lesions in both fissures and on smooth surfaces. Then, a user-defined color-coded system highlights suspicious early caries areas to visually indicate percentage range of fluorescence loss, which may be correlated to caries severity level.

Video Image



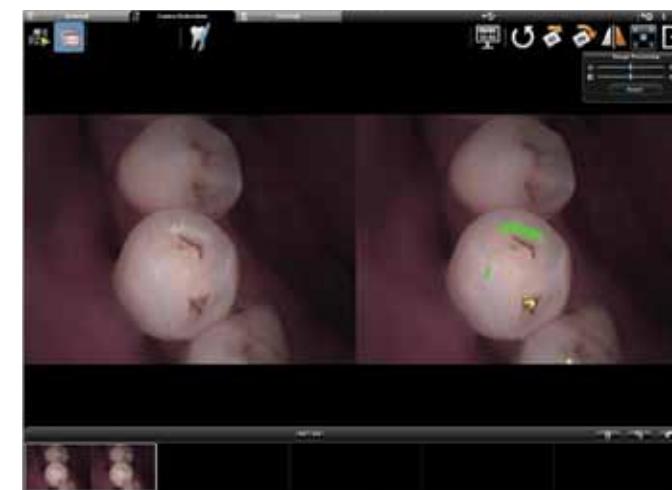
Still image Detection



The CS 1600 detects suspicious areas during screening. Use FIRE to conduct further analysis.

Superior Workflow

The CS 1600's unique scanning feature promotes faster examinations while FIRE technology identifies the exact areas of concern. Unlike other devices that force the user to take multiple readings on each tooth and record the results by hand, the CS 1600 provides a streamlined workflow—eliminating cumbersome “pin-point” exam protocols. The camera intuitively gathers information from the image and quickly displays it on the monitor, allowing users to focus on a specific region of interest. This allows you to quickly capture the data you need without removing the camera from the patient's mouth after each reading.



The CS 1600 acquisition interface includes the following modes:

- Normal Mode
- Caries Detection Mode
- Portrait Mode

Engineered for success

Ergonomic elegance

The compact and lightweight CS 1600 has been ergonomically designed and tested to fit comfortably in hands of all sizes. Two acquisition buttons, located on both the front and back side of the camera, have been strategically placed for convenient operation for both upper and lower arches. And the stylish neutral design matches the décor of any practice.

Smart accessories

The CS 1600 camera comes with all the accessories you need to get started, including a pack of disposable hygienic sheaths, autoclavable collars for aiding caries screenings, and a holder. Ask your local Carestream Dental representative about all available accessories.



Camera holder



Collar for caries detection

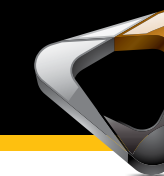


Disposable hygienic sheaths

Technical Specifications

Sensor:	Micron 1/2.5 CMOS 2592 (H) x 1944 (V) Effective
Video Resolution:	640 (H) x 480 (V)
Image Resolution:	1024 (H) x 768 (V)
Focus Range:	1 mm - infinity
Angle of View:	90°
Field of View:	80°
Focus:	Autofocus
Light Source:	3 layer illumination, 6 blue LEDs, 12 White LEDs array
Display Source:	PC
Connection:	USB 2.0 high-speed interface

CS 1600



Would you like to know more?

Visit www.carestreamdental.com or contact your local authorised dealer.
Want to subscribe to our newsletter? E-mail dentalnews@carestream.com.

Introducing the CS 1600 Intraoral Camera
Revolutionary caries detection.
FIRE technology. Superior patient care.



Early caries detection for healthier patients

Limitations of outdated methods

Early caries detection during screening allows for more accurate diagnoses, more effective treatment options for involved teeth and better, more dependable results for patients. Visual and tactile examinations are often subjective while explorers can damage weakened areas of the tooth and further spread decay. In addition, intraoral radiographs often reveal caries only once it has reached advanced stages, requiring more involved restorative procedures. While x-rays can identify larger areas of decay, small sub-surface lesions or occlusions under 3mm are rarely detected.

Earliest caries detection

Early detection is the most efficient way of treating tooth disease. Caries detected in early stages can be reversed through simple remineralization treatments, avoiding costly and unpleasant restorative procedures. The CS 1600 helps dental practitioners to identify, monitor and treat carious lesions earlier than ever before. It aids in the detection of suspicious incipient caries (i.e. early caries that are still in the “white spot” stage) on both smooth and occlusal surfaces and enables practitioners to better assess and treat sub-surface lesions and smaller regions (<3mm) of decay.

Improved patient communications

With the CS 1600, practitioners can more easily communicate patient conditions and treatment options during exams, resulting in improved treatment acceptance and enhanced patient health. Automatic generation and display of detection results simplify the caries diagnosis process and help the dentist communicate the various stages of infection to patients in a way they really understand. Easy-to-use imaging software allows practitioners to capture, store and retain patient images. These images can then provide comparison data, enabling the practitioner to track disease progression or regression and monitor treatment effectiveness over time.



High-tech three layer illumination system includes:

- 6 Blue LEDs that excite fluorescent light
- 12 White LEDs (6 polarized and 6 unpolarized) that produce white light

Maximize investment

Twice the functionality

As a convenient 2-in-1 caries detection and intraoral camera device, the CS 1600 eliminates the need for multiple instruments. Serving as both a diagnostic aid and patient education tool, the CS 1600 helps dental practitioners provide a higher level of patient care. Enhancing the office image as a “high tech practice,” the CS 1600 can also improve the patient experience, increasing referral opportunities.



Highest image resolution and < 1mm auto-focus technology is ideal for endodontic applications.



Full range of image types. Capture full-arch, intraoral, macro views and portraits.



Easily visualize hard-to-see areas of the mouth and small details invisible to the naked eye (i.e. cracks, tooth decay, pulp chamber, etc.).

Easy to share and integrate

Convenient “plug and use” USB design makes the CS 1600 the ideal camera to share between operators. TWAIN compatibility means the camera can be easily integrated with leading imaging software.

Backed by expert service and support

Like all Carestream Dental products, both the CS 1600 and Kodak dental imaging software are easy to learn and use, minimizing training time and maximizing practice productivity. And, the CS 1600 is fully backed by expert support and extended warranty programs to further optimize return on investment.